

**1. Error loading single OME-TIFF file or multiple OME-TIFF files with the FLIM data set (error dialog):**

Unable to load! Not time resolved data.

(This is the same for both 118 and 59 FLIM channels)

**2. Error loading single .msr file with 118 FLIM channels (time per channel = 0.110437 ns = 110.437 ps)**

Starting FLIMfit...

Error using flim\_data\_series/get\_image\_dimensions (line 117)

Java exception occurred:

```
java.lang.ArithmeticException: / by zero
    at loci.formats.in.ImspectorReader.initFile(ImspectorReader.java:421)
    at loci.formats.FormatReader.setId(FormatReader.java:1426)
    at loci.formats.ImageReader.setId(ImageReader.java:835)
    at loci.formats.ReaderWrapper.setId(ReaderWrapper.java:651)
    at loci.formats.ChannelFiller.setId(ChannelFiller.java:223)
    at loci.formats.ReaderWrapper.setId(ReaderWrapper.java:651)
    at loci.formats.ChannelSeparator.setId(ChannelSeparator.java:289)
```

Error in flim\_data\_series/load\_multiple (line 31)

Error in flim\_data\_series/load\_single (line 77)

Error in flim\_data\_series\_controller/load\_single (line 159)

Error in front\_end\_menu\_controller/menu\_file\_load\_single\_callback (line 645)

Error in front\_end\_menu\_controller>@(varargin)obj.menu\_file\_load\_single\_callback  
(varargin{:})

Error in front\_end\_menu\_controller/EscapedCallback (line 263)

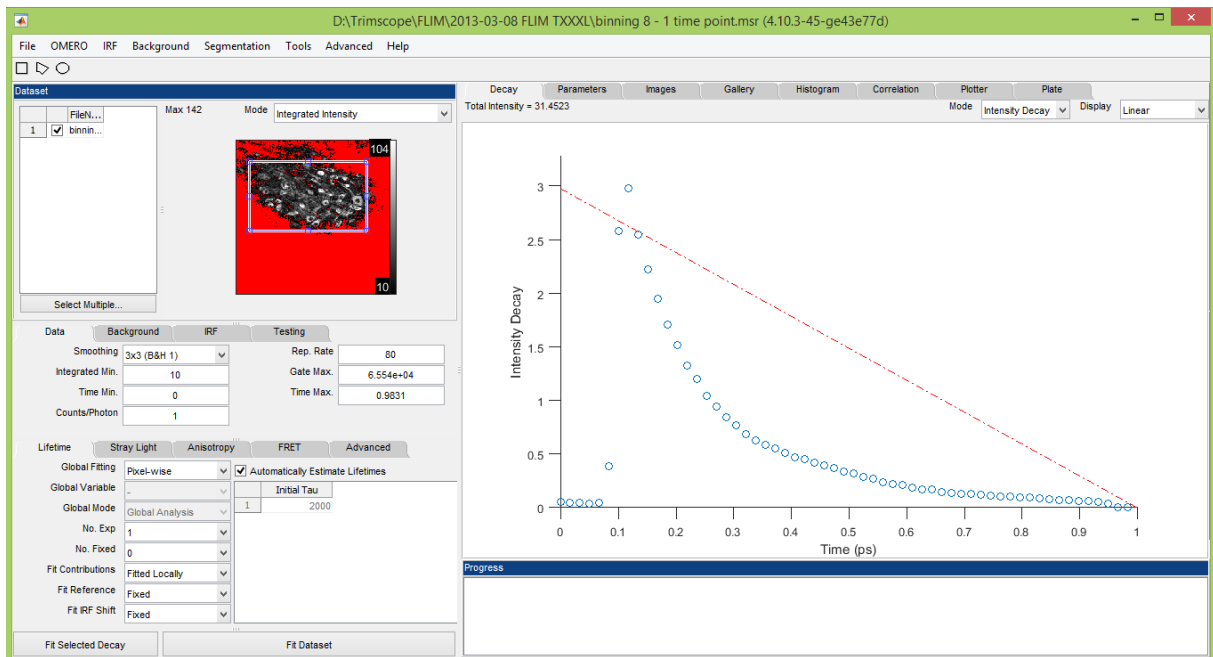
Error in front\_end\_menu\_controller>@(x,y)obj.EscapedCallback(x,y,fcn) (line 253)

Error using flim\_fit\_ui (line 273)

Error while evaluating Menu Callback

**3. Loading single .msr file with 59 FLIM channels (time per channel = 0.220875 ns = 220.875 ps)**

File is loaded, an intensity image is generated, but the time points of the decay should be ns, not ps:



**4. Errors loading .msr data containing with 118 FLIM channels (time per channel = 0.110437 ns = 110.437 ps) and 11 time points (taken every 60s)**

Starting FLIMfit...

Error using flim\_data\_series/get\_image\_dimensions (line 117)

Java exception occurred:

java.lang.ArithmeticException: / by zero

at loci.formats.in.InspectorReader.initFile(InspectorReader.java:421)

at loci.formats.FormatReader.setId(FormatReader.java:1426)

at loci.formats.ImageReader.setId(ImageReader.java:835)

at loci.formats.ReaderWrapper.setId(ReaderWrapper.java:651)

at loci.formats.ChannelFiller.setId(ChannelFiller.java:223)

at loci.formats.ReaderWrapper.setId(ReaderWrapper.java:651)

at loci.formats.ChannelSeparator.setId(ChannelSeparator.java:289)

Error in flim\_data\_series/load\_multiple (line 31)

Error in flim\_data\_series/load\_single (line 77)

Error in flim\_data\_series\_controller/load\_single (line 159)

Error in front\_end\_menu\_controller/menu\_file\_load\_single\_callback (line 645)

Error in front\_end\_menu\_controller>@(varargin)obj.menu\_file\_load\_single\_callback  
(varargin{:})

Error in front\_end\_menu\_controller/EscapedCallback (line 263)

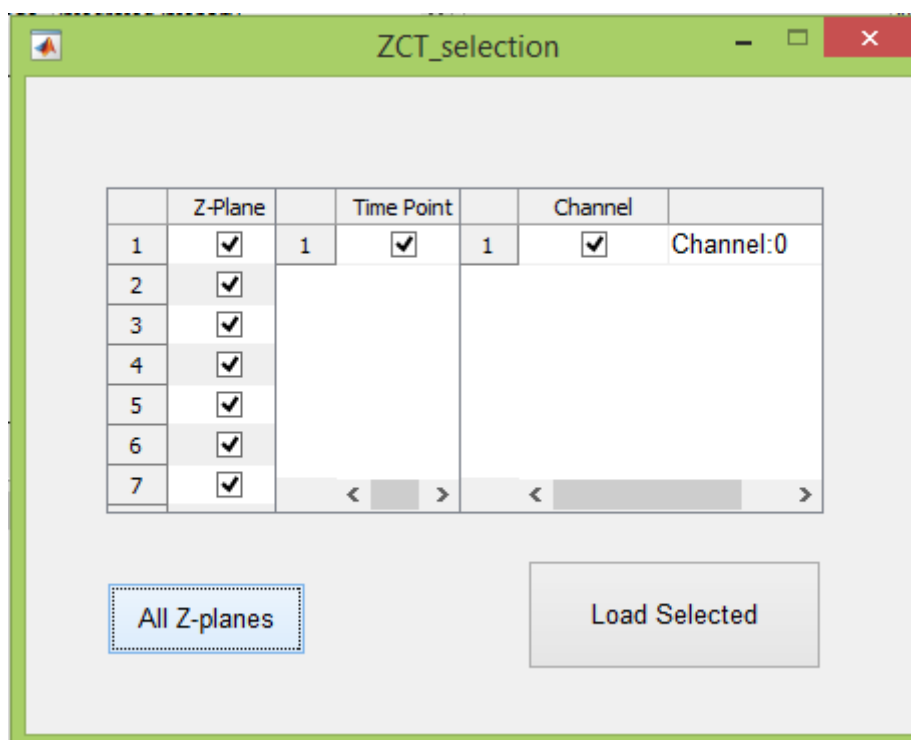
Error in front\_end\_menu\_controller>@(x,y)obj.EscapedCallback(x,y,fcn) (line 253)

Error using flim\_fit\_ui (line 273)

Error while evaluating Menu Callback

**5. Loading .msr data containing 59 FLIM channels (time per channel = 0.220875 ns = 220.875 ps) and 11 time points (taken every 60s)**

Contrary to the file with 118 FLIM channels, I get this selection options:

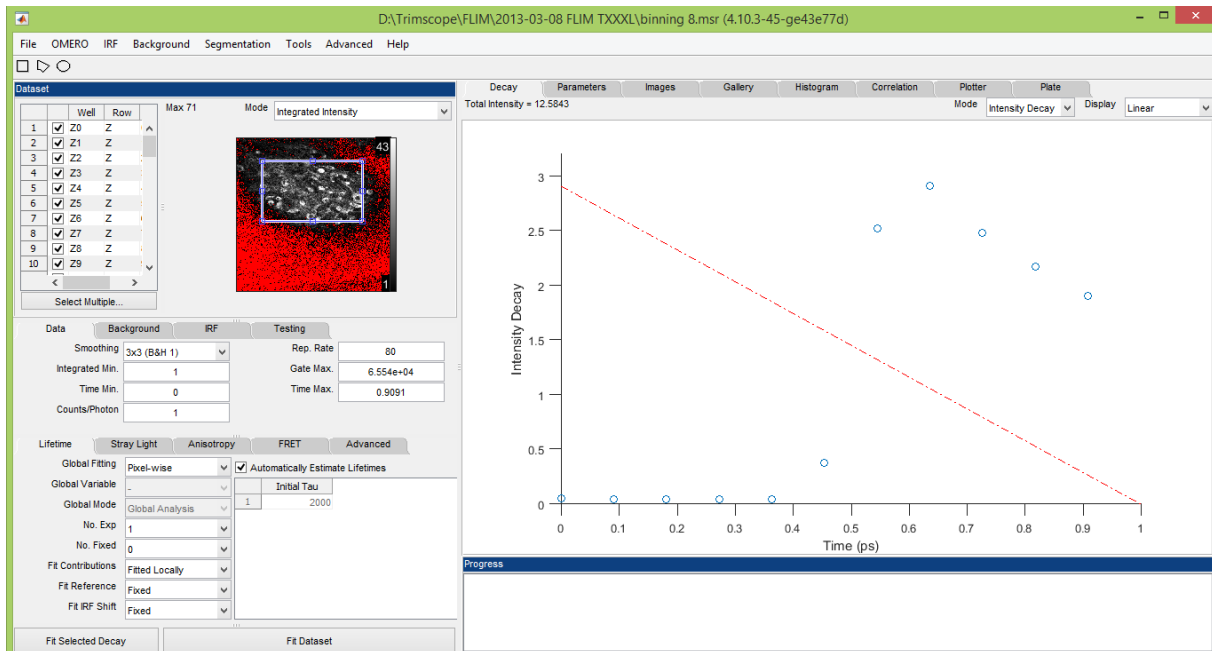


I have selected all z planes, because in ImageJ the OME-TIFF files are opened with the FLIM channels on the z dimension. The offer is correct – 59 z planes, which would correspond to the 59 FLIM channels.

However, there is only an option for 1 time point, when there should be 11 time points.

Images are indeed in a single channel (Ch 0).

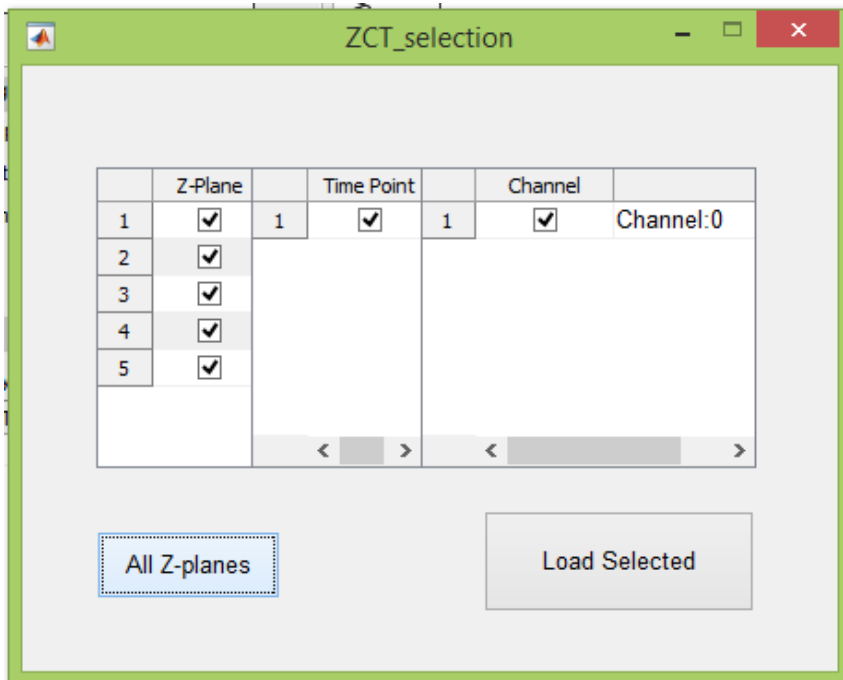
The result in FLIMfit is this:



There are 59 images in the series, and 11 points in the decay, and they should be the other way around.

## 6. Loading .msr data with 59 FLIM channels (time per channel = 0.220875 ns = 220.875 ps), 5 time points and 2 FLIM detectors

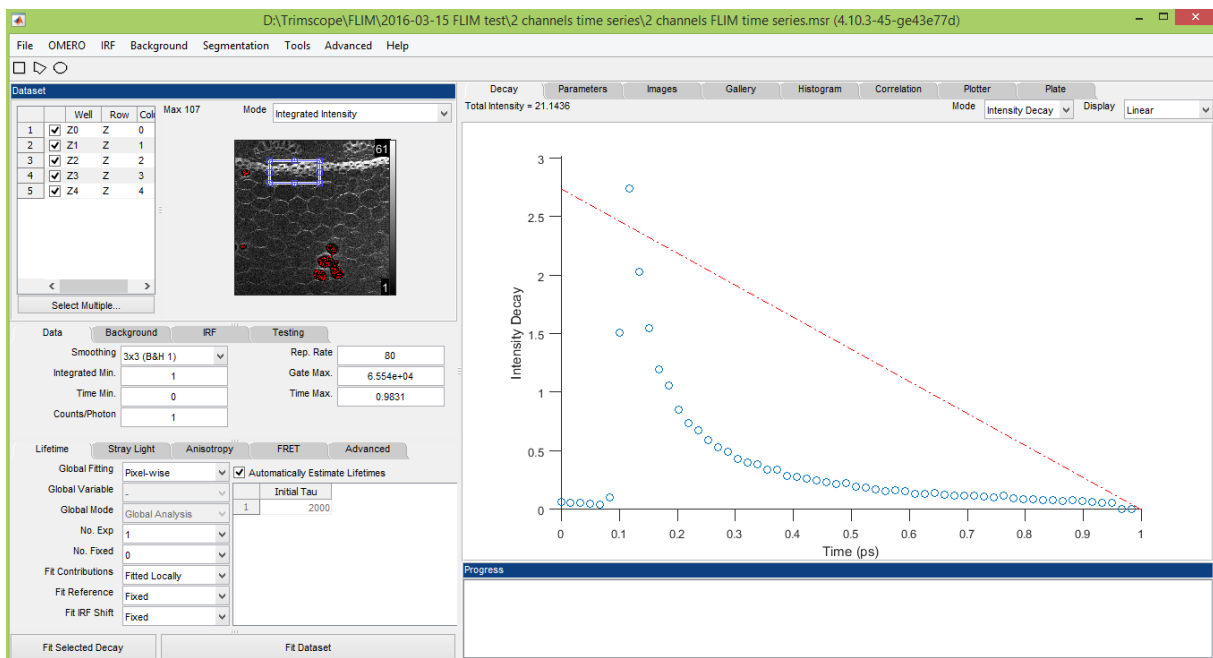
I get again the option:



But the image actually contains:

- only 1 z plane
- 5 time points (every 10s)
- 2 FLIM channels (i.e. detectors)

The results looks like this:



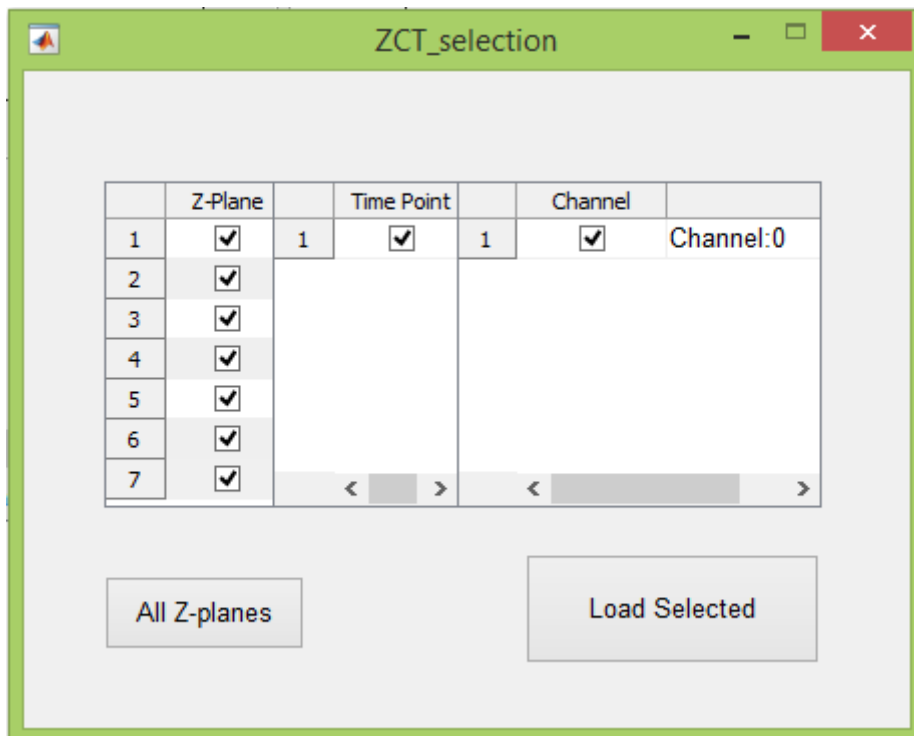
The 5 z planes are in fact 5 time points (every 5 s).

The decay looks ok as for the no. of FLIM channels, but units should be ns instead of ps.

The image of the second channel (detector) is missing.

**7. Loading .msr data with 59 FLIM channels (time per channel = 0.220875 ns = 220.875 ps), 7 z planes and 2 FLIM detectors**

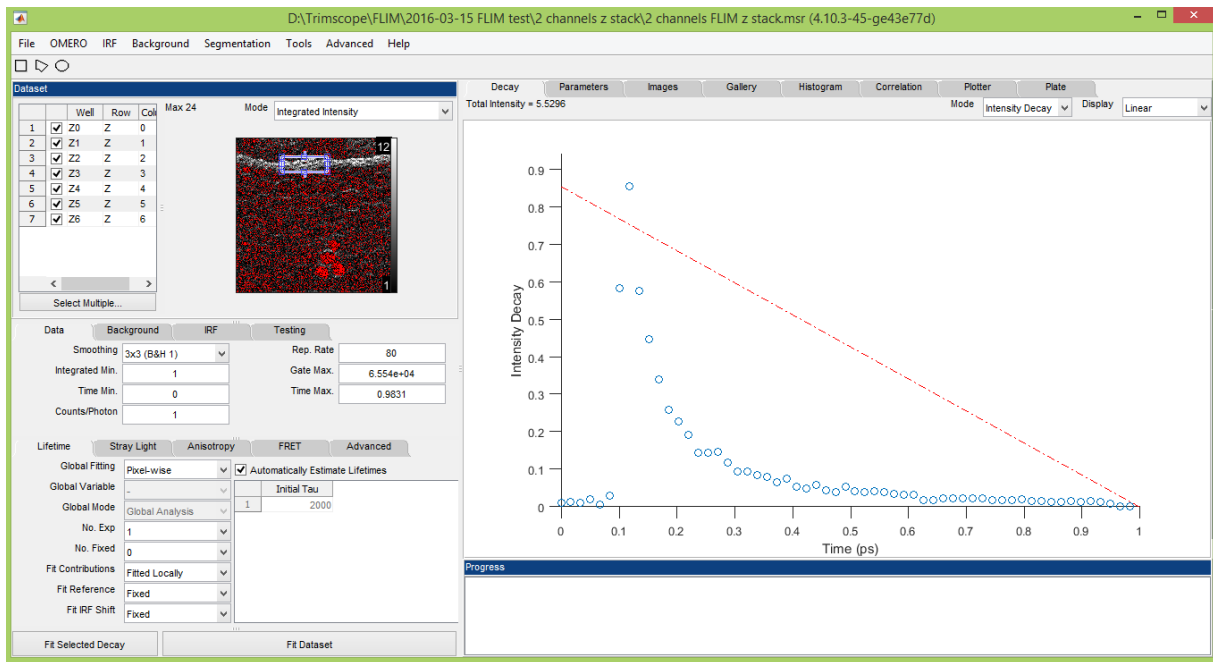
I get the selection:



The image contains:

- 7 z planes
- 1 time point
- 2 FLIM channels (detectors)

The result is this:



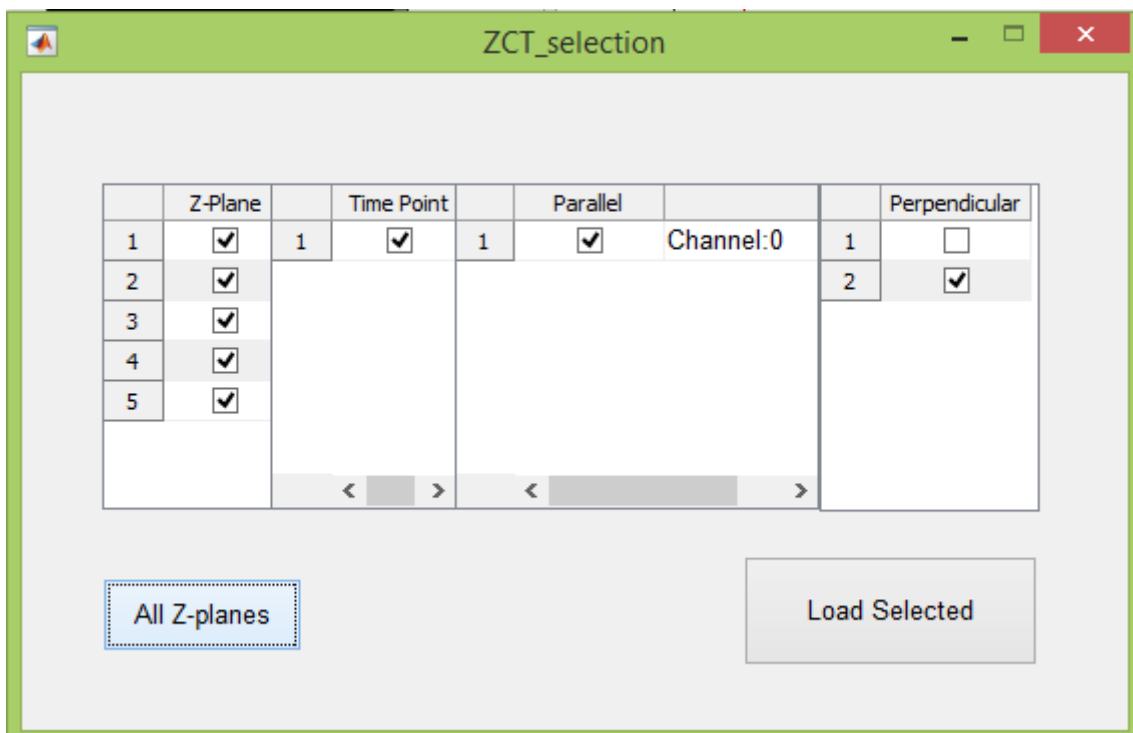
7 z planes is correct.

The no. of FLIM channels in the image is correct, but unit should be ns instead of ps.

The second channel (detector) is missing.

**8. Loading .msr data with 59 FLIM channels (time per channel = 0.220875 ns = 220.875 ps), 5 time points and 2 FLIM detectors – AS POLARISATION RESOLVED DATA / SINGLE IMAGE**

I get this options:



The 2<sup>nd</sup> channel seems to be recognised, but the software returns this error message:  
Starting FLIMfit...

Index exceeds matrix dimensions.

Error in ZCT\_selection>selectButton\_Callback (line 350)

Error in gui\_mainfcn (line 95)

Error in ZCT\_selection (line 42)

Error in matlab.graphics.internal.figfile.FigFile/read>@(hObject,eventdata)ZCT\_s  
election('selectButton\_Callback',hObject,eventdata,guidata(hObject))

Error using uiwait (line 81)

Error while evaluating UIControl Callback